

# ASA-20000LV

## Low Voltage Pump

---

### USER'S MANUAL

#### Safety Information:

**Warning:** To provide continued protection against risk of electric shock, connect to properly grounded, Residual Current Device (RCD) outlets only, using the following guidelines.

1. The pump is to be supplied through a residual current device (RCD) having a rated residual operating current not exceeding 30mA.
2. Please use the control box and related accessories that come with this product.
3. It is prohibited to operate the water pump in flammable, explosive, and corrosive liquids.
4. This product is suitable for water temperatures below 35 °C;
5. The maximum operating water depth shall not exceed 6m.
6. Please refer to the performance parameter table for the use of this product.
7. Please do not connect the water pump to any power source other than the input voltage.
8. The appliance is not intended to be used by persons (including children) with reduced physical, sensory or mental capabilities, or lack of experience and knowledge, unless they have been given supervision

or instruction concerning the use of the appliance by a person responsible for their safety.

9. Children should be supervised to ensure that they do not play with the appliance.

10. This product has multiple protection functions. If it enters the protection state, it can be restored to normal operation by turning off the power and then turning it back on.

11. If the supply cord is damaged, it must be replaced by the manufacturer, its service agent or similarly qualified persons in order to avoid a hazard.

12. Please refer to the actual appearance of the product for accuracy.

13. Please do not lift the water pump using the power cord to avoid disconnecting the wiring inside the water pump.

14. Do not submerge power supply in water.

**Important:** Aquascape Australia is not responsible for losses, injury, or death resulting from a failure to observe these safety precautions, misuse or abuse of pumps or equipment.

#### DISPOSAL:



Do not dispose this product as unsorted municipal waste.

Collection of such waste separately for special treatment is necessary. This product must not be disposed together with

the domestic waste. This product has to be disposed at an authorised place for recycling of electrical and electronic appliances. By collecting and recycling waste, you help save natural resources, and make sure the product is disposed in an environmentally friendly and healthy way.

## Product Introduction

The Aquascape Australia 20000 Low Voltage water pump is a tested and certified product with good safety and performance. To avoid unnecessary injury or damage caused by improper use, only operate the pump with the transformer supplied. Please read and understand the relevant instructions in detail before use and keep the manual for future reference.

## Characteristics of water pump

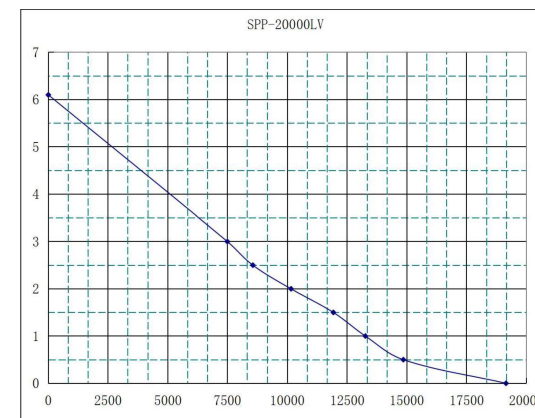
1. Adopting advanced frequency conversion technology, efficient and energy-saving, saving 65%, and ultra quiet;
2. Suitable for use in seawater and freshwater, without copper element;
3. IC electronic detection, automatic power-off protection without water;
4. Adopting wear-resistant ceramic shafts, with a long service life.
5. Made in China
6. 2 Year Warranty

## Pump Specifications:

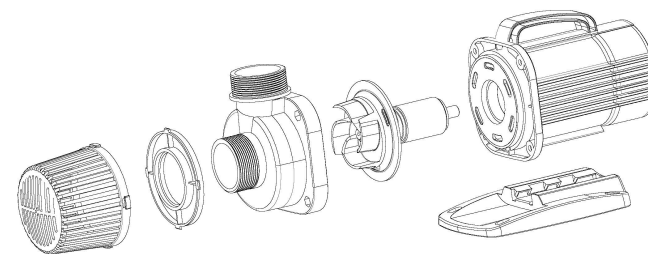
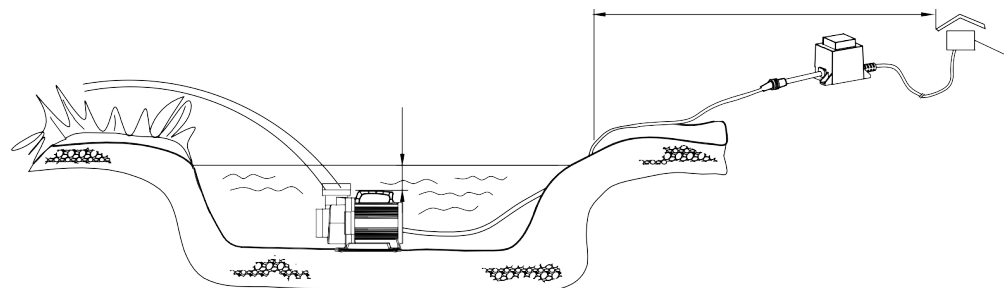
Model	Power (W)	Flow rate (L/h)	Head Max (m)
ASA-20000LV	160	20000	6.0

**Input Voltage: 12 volts**

## Flow Chart:



## Installation diagram:



**If the water pump cannot operate normally, please check according to the following situation:**

1. Check if the power supply is normal.
2. Please check the water volume and whether the water pump is completely immersed in water.
3. Please check if there are any dirt blockages inside the water pump, outlet, or pipes.
4. Regularly cleaning the water pump every month will increase its service life.

Warranty Information

**2 YEAR WARRANTY**

Our goods come with guarantees that cannot be excluded under the Australian Consumer Law. You are entitled to a replacement or refund for a major failure and compensation for any other reasonably foreseeable loss or damage. You are also entitled to have the goods repaired or replaced if the goods fail to be of acceptable quality and the failure does not amount to a major failure.

Aquascape Australia warrants that the ASA 20000 Low Voltage pump will be free of manufacturing defects for two years from date of purchase. Proof of purchase required. The warranty does not cover damage resulting from electrical supply problems, improper wiring, lightning, negligent handling, misapplication, misuse, or lack of reasonable maintenance or care. The warranty does not cover parts subject to normal wear, such as impellers. This product should only be

operated in fresh water, completely submerged, without corrosive chemicals like chlorine or bromine. If upon Aquascape Australia's inspection, the pump shows evidence of a manufacturing defect, Aquascape Australia's liability is limited, at Aquascape Australia's option, to the repair of the defect, replacement of the defective product, or refund of the original purchase price. The warranty excludes costs of labour, removal of product, shipping and expenses related to the installation and re-installation of the product. No liability for loss or damage of any nature or kind, whether arising out of or from the use of the product, whether defective or not defective, is assumed by Aquascape Australia or its affiliates. Aquascape Australia shall not be liable for any incidental, consequential or other damages arising under any theory of law whatsoever.

**Contact Us:**

Aquascape Australia

21 Progress Place

Yandina QLD 4561

[www.aquascapesupplies.com.au](http://www.aquascapesupplies.com.au)

PH: 07 5446 7963